



GAT MONTHLY MEMBERSHIP PROGRESS REPORT

Results as of: 6/30/2024

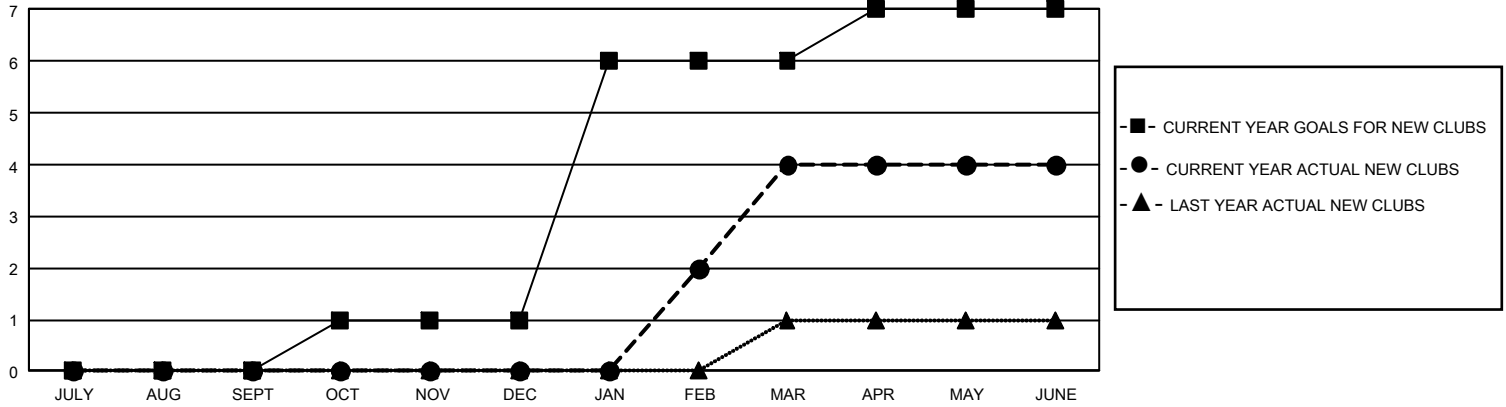
GMT Constitutional Area 5 - J, Group H

REPORT DOES NOT INCLUDE CLUBS IN UNDISTRICTED AREAS.

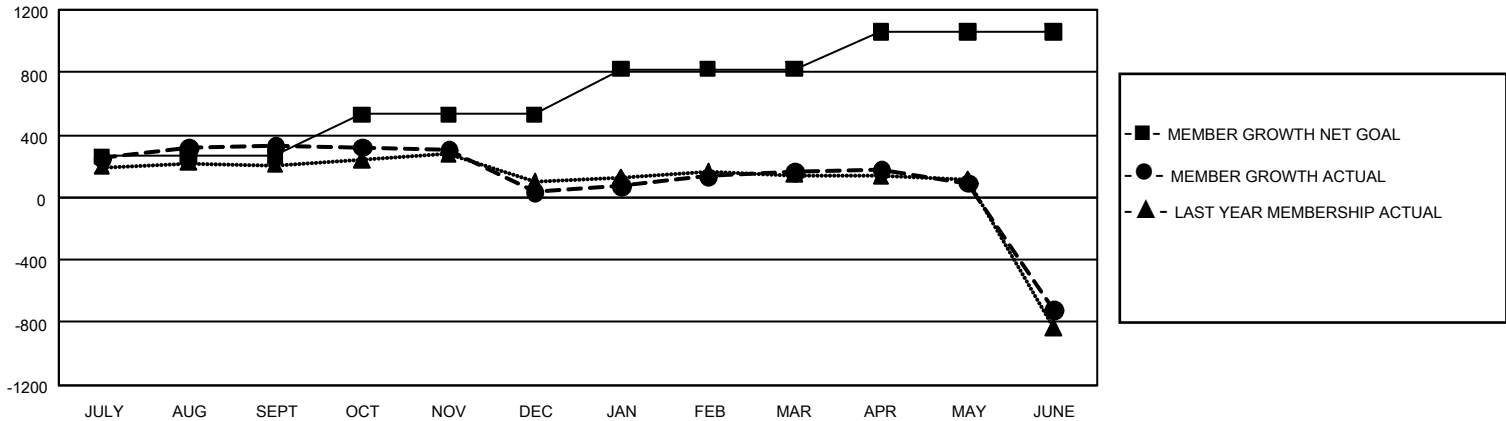
Clubs			
RESULTS FOR 2023-2024			
QUARTER	NEW CLUB GOAL	NEW CLUBS	DROPPED CLUBS
JULY/AUG/SEPT	0	0	0
OCT/NOV/DEC	3	0	0
JAN/FEB/MAR	15	4	0
APR/MAY/JUNE	3	0	9

Members			
RESULTS FOR 2023-2024			
QUARTER	MEMBER GROWTH NET GOAL	MEMBER GROWTH ACTUAL	DROPPED MEMBERS ACTUAL (including transfers)
JULY/AUG/SEPT	262	543	189
OCT/NOV/DEC	270	202	485
JAN/FEB/MAR	290	387	251
APR/MAY/JUNE	238	340	1,191

GOALS AND ACTUAL NEW CLUBS CUMULATIVE



GOALS AND ACTUAL MEMBERS CUMULATIVE



DROPPED CLUBS: 9	313 CLUBS OF 389 ADDED 1 OR MORE NEW MEMBERS	GENDER DISTRIBUTION	
		MALE 12,967 (74.84%) FEMALE 4,359 (25.16%) NON BINARY 0 (0.00%) PREFER NOT TO ANSWER 1 (0.01%)	
DROPPED MEMBERS		CLICK HERE FOR CUMULATIVE MEMBERSHIP DATA	TOTAL FAMILY UNIT MEMBERS 7,092
DECEASED 142 CLUB CANCELLED 12 OTHER 1,939 TOTAL 2,093	FAMILY MEMBERS PAYING HALF DUES 3,921		